

# Welcome to Liberty Middle School

## 6th Grade Orientation 2025





# Who's Who at LMS

## Main Office Staff

- Mr. Xavier Fitzgerald - *Principal*
- Mr. Stephen Olshalsky - *Assistant Principal*
- Ms. Sendi Mendoza - *Administrative Assistant*
- Mrs. Noura Estrada - *Administrative Assistant*
- Mrs. Janet Coppola - *Administrative Assistant*
- Mr. Aaron Carr - *Security*

## School Counseling Staff

- Mr. Jeff LaFoon - *Last Names L-Z*
- Mrs. Taylor Tellawy - *Last Names A-K*

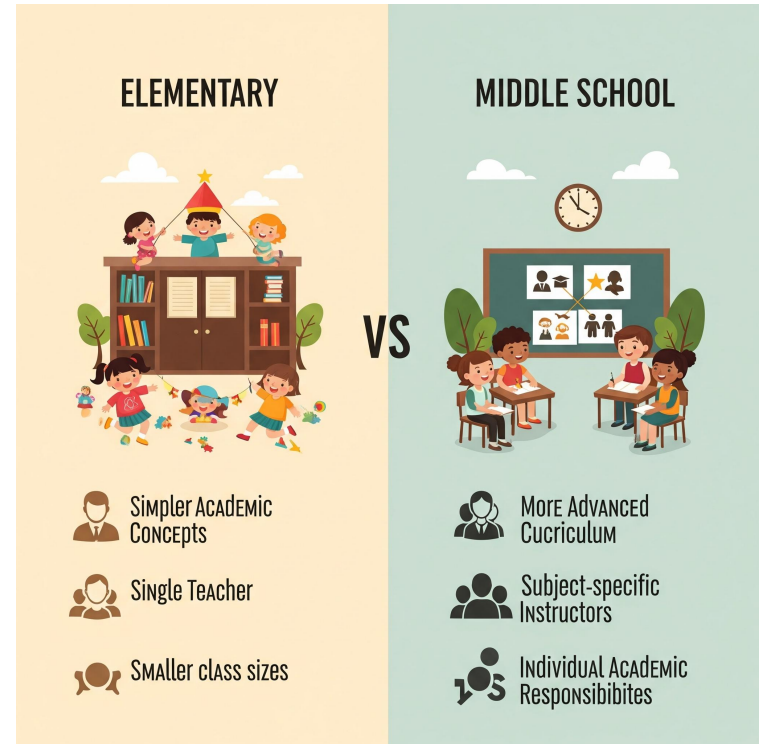
## Child Study Team

- Mrs. Dawn Raboy - *Social Worker*
- Mr. Todd Cohen - *LDT-C*
- Mr. Raphael Leniar - *School Psychologist*
- Mrs. Alyson Abdallah - *BCBA*



# From Elementary to Middle: What's Changing?

- ★ Learning a New School
- ★ School hours
  - 8:00 am arrival 2:53pm dismissal
    - Entry Auditorium Door
- ★ Switching Classes (3 Minutes passing)
- ★ 6 teachers
- ★ Lockers & Combination Locks
- ★ New Related Arts Classes
- ★ Making New Friends
- ★ A Variety of Extracurricular Clubs & Intramural Sport and other Activities to Join



# Middle School: Helping Your Child Thrive

## Encourage Independence

Encourage your child to email teachers and staff members with questions about assignments. Partner with us to teach students responsibility.

## Support from Home

Visiting LMS website and checking student agendas daily; attending Back to School Night and reviewing LMS Student Handbook with your child are ways to support your middle schooler from home.

## Supportive Habits

Keep technology in a public area while at home - create a shared space to study and complete work, know your child's usernames and passwords, bring any devices out of the bedroom.

## Skills to Develop

Organizational and study skills the keys to success in middle and high school. LMS School Counselors are here to assist your child with these skills if needed!



# General School Expectations

**School I.D.-** School issued IDs are **required** to be worn on a lanyard by students daily and at all times during school hours.

**Homework** - May have HW every day in several classes (Especially in Accelerated classes!)

**Assessments** - May have multiple assessments on the same day

**Projects** - Could be overlapping

**Behavioral Expectations** - Maturity & good decision making are key, kindness & respect to all in the building, good organization, self-advocacy

**School Cell Phone and Ear Device guideline** - All Cell phones and ear devices are off and in the locker from 8:00 am to 2:53 pm cell phones will be **confiscated by staff** if devices are observed out of the locker (Medical Exemptions are allowed)



**HIGH ACHIEVEMENT  
ALWAYS TAKES PLACE  
IN THE FRAMEWORK OF  
HIGH EXPECTATION.**



# Families and Visitors:

*Thank  
You*  
for leading by example.



We extend our sincere gratitude for your partnership in reinforcing our school's cell phone policy and dress code. The great example you set at home is a huge help in promoting a positive and distraction-free atmosphere in our classrooms and hallways.

# Chromebooks

## Chromebooks :

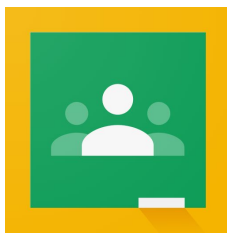
Will be distributed in September in School

Bring to each class

**Google Classroom** – Turn on Notifications & Check Often

**Gmail** – Check During Homeroom, Check Often

**Google Drive** – Organize your Docs & Slides in Folders





# LMS Schedule

- Bell rings at 8:00 am  
8:00-8:10am Locker time any student reporting to school after 8:10 am is marked late
- Homeroom in Period 1 until 8:10 am
- 7 periods each day
  - ELA, Math, Science & Social Studies meet every day.
  - A-B Schedule:
    - Languages: Spanish, Italian, Mandarin
    - 3 quarters of Phys. Ed. and 1 quarter of Health
    - Related Arts: Band, Chorus, Orchestra, Art
  - Lunch: 27.5 minutes / Advisory 27.5 minutes
- End of Day 2:53 pm
- After school Help 2:53- 3:23 pm (Monday - Thursday)
  - *Parent Pick up required unless student is a walker*



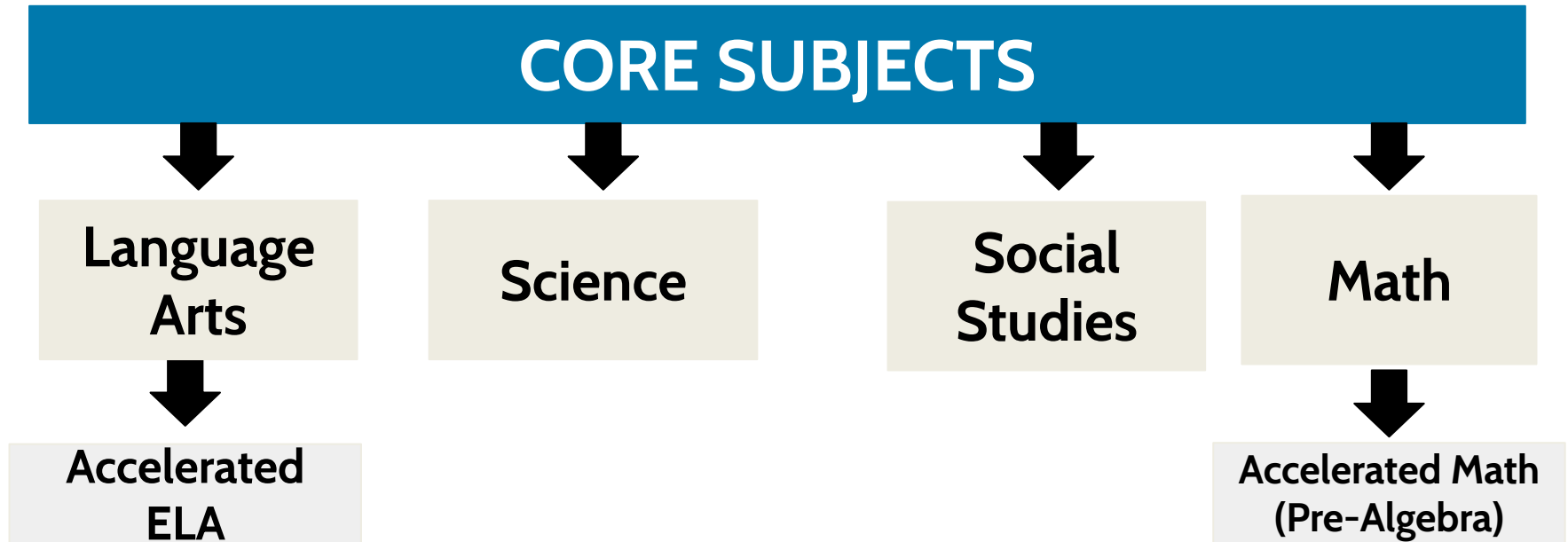


# What is Advisory and Math Lab ?

- Social Emotional and Character Education lessons
- Tutorial time
- Organization/ Agenda Book check
- Announcements
- Drop Everything And Read (D.E.A.R.)
- School Trip Information/Permission Slips
- Math labs are a graded Math support period on an A/B day for the following courses:
  - Math 6 students will have: Advisory and Math lab: Foundational Math and Pre Algebra
  - Math 7 students will have: Advisory and Math lab: Pre Algebra
  - Math 8 students will have: Advisory and Math lab: Algebra I



# LMS Core Academic Classes



# LMS Related Arts

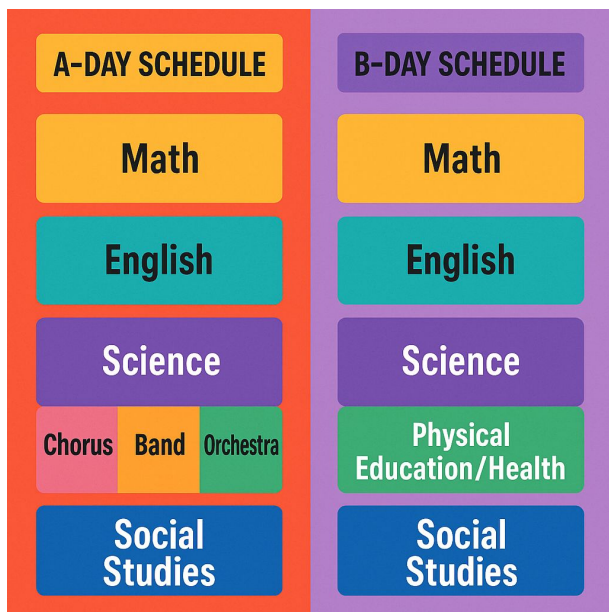
## Example: Related Arts Daily Schedule



- 1 Marking Period Each of a Foreign Language (Spanish, Italian, and Mandarin)
- 1 Marking Period of Art
- By 7th grade, students select which Foreign Language they would like to specialize in and take in 7th grade

# LMS Related Arts

## Example: Related Arts A/B Day Schedule



- 6th Grade Students will take a music elective of their choice
- Physical Education is taken for 3 marking periods and Health is taken for 1 marking period
- Your child's music elective and phys ed/health class will be the same period each day and alternate on A and B Days

# Music Program



## Instructional Class

- Band
- Gen Music/Chorus
- Orchestra

## Extra-Curricular

- Jazz Band
- Select Strings
- Chamber Singers
- Spring Musical



# End of Day



## Options for final destination:

- Bus or walking home → Out at 2:53 pm
- Extra help with teacher: Monday – Thursday, 2:53 – 3:23 pm
  - *Parent Pick up required by 3:30 pm*
- Clubs , Intramural Sports & Activities: Monday – Thursday, 3:00 – 4:30 pm



# LMS Clubs & Extracurricular Activities

- Academically Speaking
- Art Club
- Culture Club
- Drama Club
- Fitness Club
- Gay Straight Alliance
- Helping Hands (Community Connections)
- Intramural Sports
- Italian Club
- Jazz Band
- Math Club



- Newspaper Club
- Science Club
- Select Strings
- SOUL Mentoring/Majority Ambassadors
- STEM Club
- Strategic Gaming Club
- Student Council
- Totally Tech
- Yearbook





# Field Trips and Events

## 6th Grade Field Trips

- Quarterly Field Trips
- Frogbridge
- Field Day

PTA → Back to School Get Togethers, Movie Nights,

Student Council → Fall Dance, Winter Dance, Spring Dance



# Join our PTA!!

**CALLING ALL INCOMING  
LIBERTY MIDDLE SCHOOL  
PARENTS AND GUARDIANS!**



**WE ARE CURRENTLY SEEKING VOLUNTEERS TO  
SERVE ON THE PTA BOARD OF DIRECTORS FOR THE  
2025 - 2026 SCHOOL YEAR.**

**OPEN POSITIONS\*\*:**

- **PRESIDENT**
- **RECORDING SECRETARY**
- **CORRESPONDING SECRETARY**
- **VP OF FUNDRAISING**

**EMAIL [LIBERTYMSPTAWO@GMAIL.COM](mailto:LIBERTYMSPTAWO@GMAIL.COM) FOR MORE  
INFORMATION OR TO NOMINATE A CANDIDATE.**

**\*\* POSITIONS ARE 2-YEAR TERMS**



# Health Requirements for Entry into 6th Grade

## IMMUNIZATIONS:

The State of New Jersey has revised the mandatory requirements for school attendance (N.J.A.C. 8:57-4) for children entering SIXTH GRADE:

- ❖ One dose of meningococcal vaccine
- ❖ One dose of Tdap, given no earlier than the 10th birthday.

## PHYSICAL EXAM:

An updated physical dated within the past year must be submitted to the school nurse before school begins.

A physical is required by students in pre-kindergarten, kindergarten, fourth, sixth and ninth grades, plus new enrollees in other grade levels.

*Written medical documentation of immunizations is required by New Jersey State Law. Your child must be in compliance with this law to begin school as scheduled.*

# Liberty Website



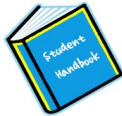
LIBERTY .....PERSEVERANCE RESPONSIBILITY INTEGRITY DETERMINATION EXCELLENCE....PRIDE



[School Opening Info](#)



[Daily Bulletin](#)



[Student Handbook](#)



[Clubs and Activities](#)



[Athletics](#)

*Click the links below for important information, updates, & events...*



*Click the link above for events and happenings...*



# Tour Liberty!!

- Explore classrooms and see our facilities.
- Meet some of our staff!
- Experience a day in the life at LMS.





**Thank You for joining us!**

